

Drainage technology - floor drains

Drainage technology - channels

## **Drainage technology - parking areas**

Drainage technology - landscaping

Manhole covers & pipe leadthroughs

Crash guards & edge protection

Doors & windows

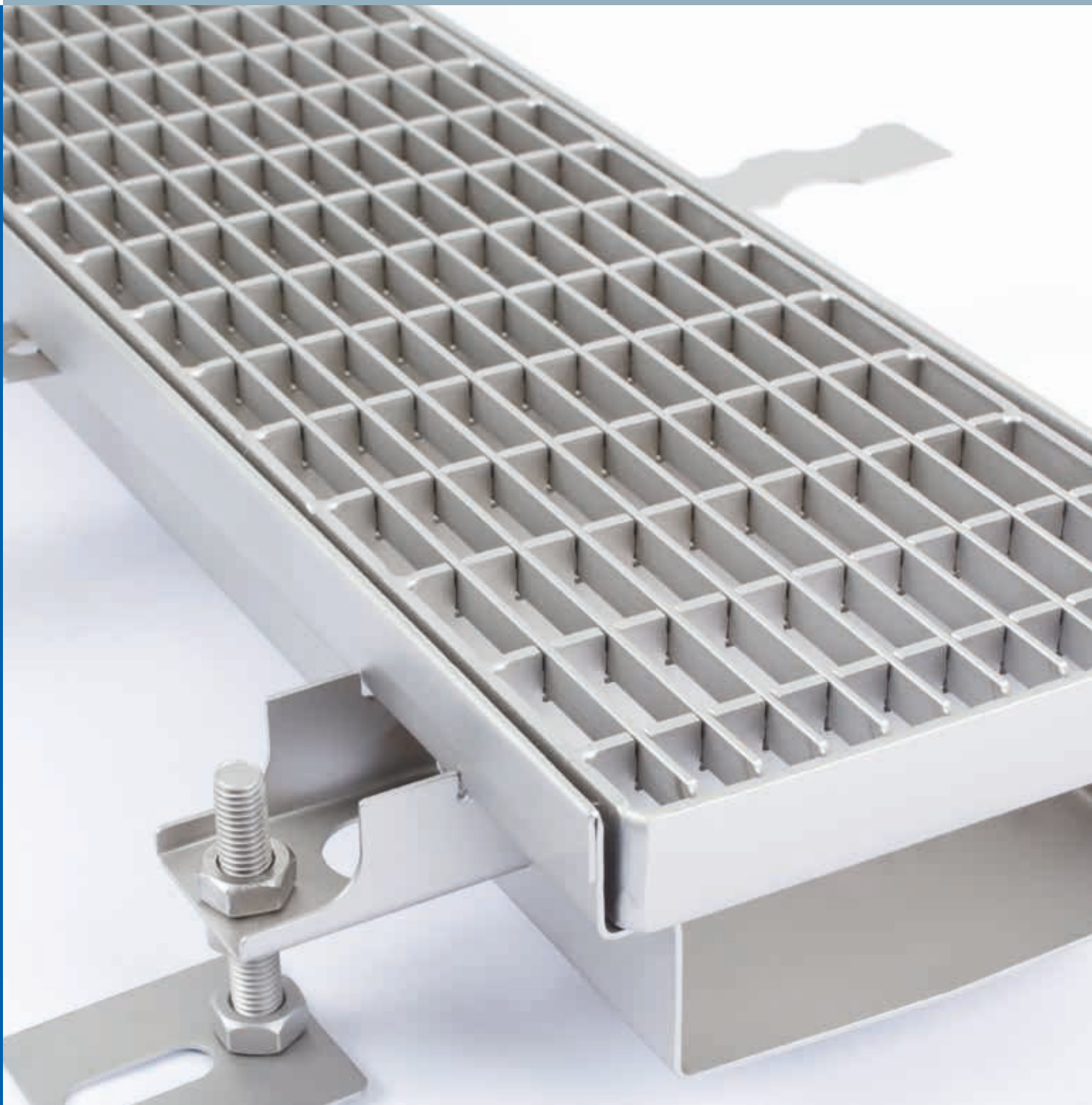
Control cabinets

Special commissions



**WIEDEMANN-TECHNIK**

Quality in stainless steel





## Precision & Expertise for Stainless Steel

Wiedemann-Technik has manufactured high-quality stainless steel products for more than 70 years. Starting out with floor drains, drainage channels and manhole covers for industrial applications, our product range has been expanded over the years to include doors and windows as well as control cabinets and drainage systems for landscaping and today features a comprehensive selection of stainless steel solutions.

The high quality of the material and the continuous optimisation of production through DIN EN ISO 9001:2008 certification all result in the manufacture of durable quality products “made in Germany”.

Our specialised consultants work with you to plan and create the perfect product, customised to your requests and requirements - professionally, precisely and with a focus on the result.

# Table of Contents

---

## Drainage Technology - Parking Areas

---

■ <b>Introduction</b>	<b>4</b>
■ <b>Parking level drainage channel</b>	<b>6</b>
PDR	<b>6</b>
PDR-G (variant with reinforced edge protection)	<b>6</b>
PDR-I (variant with reinforced edge protection and reinforced grid support)	<b>6</b>
■ <b>Special types of parking level drainage channels</b>	<b>8</b>
PDR-N (low height)	<b>8</b>
PDR-B (for use with liquid coatings)	<b>8</b>
■ <b>Parking level heavy-duty drainage channel (SLR)</b>	<b>10</b>
■ <b>Open area channel (FFKR)</b>	<b>12</b>
■ <b>Parking level floor drain (PDA)</b>	<b>14</b>
Drain variants	<b>14</b>
Parking level floor drain, one piece (DRS-S)	<b>16</b>
Parking level floor drain, two pieces, height adjustable (H-S)	<b>16</b>
■ <b>Accessories</b>	<b>18</b>
■ <b>Angular design for flooring separation</b>	<b>19</b>



## Drainage in Parking Areas

WIEDEMANN has been producing quality stainless steel drainage channels and floor drains for decades.

Our experience has helped us adapt our products to new requirements over the years and refine them with a great deal of expertise. One of the results has been the development of drainage systems for parking areas.

We can manufacture products such as long drainage channels with and without flange connections for you - adapted to your requirements to millimetric accuracy. To ensure the quality, all WIEDEMANN products are installed exclusively by our own technicians. From the extensive coordination of assembly to the customised and ready-to-use drainage channel - our technicians level, straighten, weld and fix your new stainless steel channel on site. This saves you time and provides you with first-class WIEDEMANN quality.



Parking area drainage makes it possible to keep water away from surfaces or drain it very quickly because the stability and safety of the structure can be impacted by water.

To secure traffic routes and protect your investments in the new construction and restoration of underground car parks, multi-storey car parks and outdoor car parks, the reliable drainage of these areas is indispensable.

WIEDEMANN drainage systems for parking areas can be used in many areas, such as:

- Parking levels
- Multi-storey car parks
- Underground car parks
- Pedestrian underpasses
- Ramp areas

We offer solutions for a wide variety of load ranges, e.g. for drainage or evaporation channels for surface drainage and channel systems with high loading capacity for ramp areas as well as solutions for low installation heights.

### **We generally distinguish two channel systems:**

---

#### **Parking level drainage channels-PDR**

---

WIEDEMANN parking level drainage channels are usually used to drain surfaces. They can be supplied in various dimensions, depending on the amount of water to be absorbed.

---

#### **Heavy-duty drainage channel-SLR**

---

WIEDEMANN heavy-duty drainage channels are used in areas with particularly high mechanical loads, such as ramps. They also come in various profile widths.

### **These drainage channel systems are complemented by our floor drains:**

---

#### **Parking level floor drain-PDA**

---

WIEDEMANN parking level floor drains are available as point drains and as drains that are firmly integrated in the drainage channels. They come in different variants, as one or two pieces, as well as with nozzles in various nominal widths.

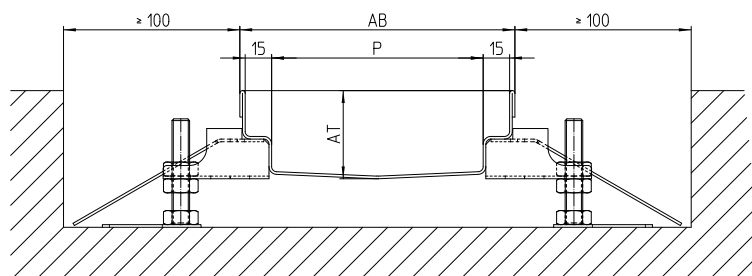
### **We are committed to providing you with the right solution for your requirements - with expertise and precision.**

Functioning technical solutions of course involve selecting the perfect material. That is why Wiedemann makes all drainage systems from stainless steel. Stainless steel products in V2A (1.4301) or V4A (1.4571) offer high corrosion resistance, providing a durable solution with a timelessly elegant look. This offers you the best combination of value preservation and durability.

Our range of products is complemented by an extensive selection of accessories that include silt traps, air traps, fire protection systems and various covers.



## Parking level drainage channel (PDR)

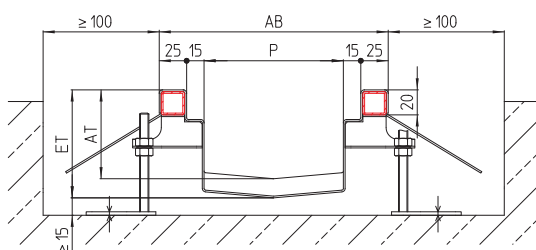


We produce parking level drainage channels for passenger car traffic with a folded channel edge, inside transverse gradient and a longitudinal gradient of 1%. They come with wall anchors every 500 mm and height adjustable rawl plug assembly feet every 1000 mm for a friction fit floor connection. The surface is stainless steel grain blasted. Applications include parking levels, multi-storey car parks, underground car parks and pedestrian underpasses.

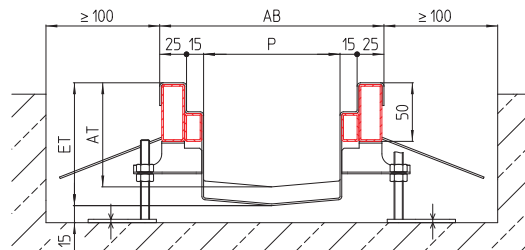
Channel model	Channel profile P [mm]	Outside width AB [mm]	Channel height AT [mm]	Initial length[mm]	Gradient
PDR-120	80	116	50 / 80 / 100	up to 5,800	1 %
PDR-160	120	156	50 / 80 / 100	up to 5,800	1 %
PDR-210	170	206	50 / 80 / 100	up to 5,800	1 %
PDR-260	220	256	50 / 80 / 100	up to 5,800	1 %

Customised dimensions on request

## PDR variants with reinforced edge protection/grid support



PDR-G



PDR-I

The PDR-G features edge protection reinforced with stainless steel rectangular profiles, and the PDR-I has an additional grid reinforced with stainless steel rectangular profiles.

Drain model	Channel profile P [mm]	Outside width AB [mm]	Channel height AT [mm]	Initial length[mm]	Gradient
PDR-I/G-070-150	70	150	60	up to 5,800	1 %
PDR-I/G-090-170	90	170	60	up to 5,800	1 %
PDR-I/G-120-200	120	200	60	up to 5,800	1 %
PDR-I/G-170-250	170	250	60	up to 5,800	1 %
PDR-I/G-220-300	220	300	60	up to 5,800	1 %
PDR-I/G-320-400	320	400	60	up to 5,800	1 %
PDR-I/G-420-500	420	500	60	up to 5,800	1 %

Customised dimensions on request

## Material

- 1.4301 (AISI 304)
- 1.4571 (AISI 316Ti)<sup>1</sup>

## Material thickness

- 1.5 mm
- 2.0 mm

## Cover variants



■ GR MW30/10



■ GR MW25/25



■ Bar grate cover

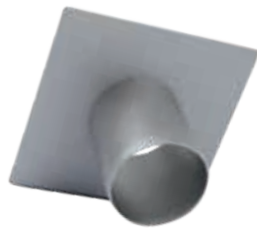


■ Plate cover

## Optional

- Load class possible up to D400 (depending on channel width)
- with anti-slip
- All covers also available as bolted connections (up to 8 bolts)
- GFK covers available on request

## Accessories



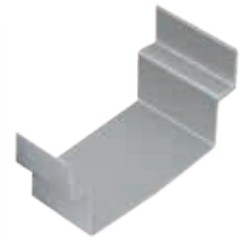
■ Welded nozzle NW DN 70/  
DN 100



■ Plug-in air trap DN 100



■ Silt box



■ Connector



■ Flange connection



■ Fire protection by means  
of Wavin fire protection  
sleeve BB.R90

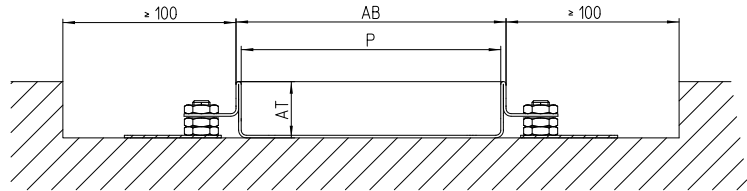


- Installation aid (without illustration)
- Welded-in or bottom-welded drainage channel  
floor drain (without illustration)

<sup>1</sup> all parts touched by media in 1.4571 (AISI 316 Ti)

## Special types of PDR

### PDR-N (low height / refurbishment channel)

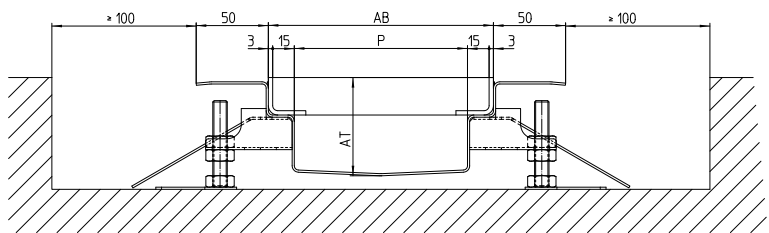


Refurbishment and maintenance in particular often have only low heights for installation. Our PDR-N is the right drainage solution with a height of only 32.5 mm and a variable overall width. The channel does not have a gradient. The surface of the channel is stainless steel grain blasted.

Drain model	Channel profile P [mm]	Outside width AB [mm]	Channel height AT [mm]	Initial length[mm]
PDR-N-160	150	156	32.5	up to 5,800
PDR-N-210	200	206	32.5	up to 5,800
PDR-N-260	250	256	32.5	up to 5,800
PDR-N-360	350	356	32.5	up to 5,800

Customised dimensions on request

### PDR-B (liquid coating)



The PDR-B combines the functions of the PDR with an optional connection to liquid coating systems (e.g. PMMA). The adhesive flange is installed on the circumference allows a direct connection of the drainage system to the floor coating. The height of the adhesive flange can be adjusted depending on the requirements of the relevant floor coating. With inside lateral gradient and a longitudinal gradient of 1 %. The surface of the channel is stainless steel grain blasted.

Channel model	Channel profile P [mm]	Outside width AB [mm]	Channel height AT [mm]	Initial length[mm]	Gradient	Flange height H [mm]
PDR-B-160	120	156	50 / 80 / 100	up to 5,800	1 %	Customer's choice
PDR-B-210	170	206	50 / 80 / 100	up to 5,800	1 %	Customer's choice
PDR-B-260	220	256	50 / 80 / 100	up to 5,800	1 %	Customer's choice
PDR-B-360	320	356	50 / 80 / 100	up to 5,800	1 %	Customer's choice

Customised dimensions on request



### Material

- 1.4301 (AISI 304)
- 1.4571 (AISI 316Ti)<sup>1</sup>

### Material thickness

- 1.5 mm
- 2.0 mm

### Cover variants



■ GR MW30/10



■ GR MW25/25



■ Bar grate cover

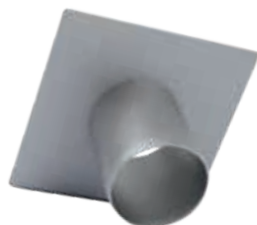


■ Plate cover

### Optional

- Load class possible up to D400 (depending on channel width)
- with anti-slip
- All covers also available as bolted connections (up to 8 bolts)
- GFK covers available on request

### Accessories



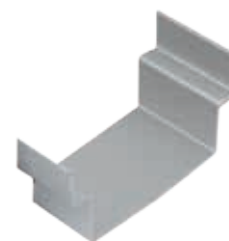
■ Welded nozzle NW DN 70/  
DN 100



■ Plug-in air trap DN 100



■ Silt box



■ Connector



■ Flange connection



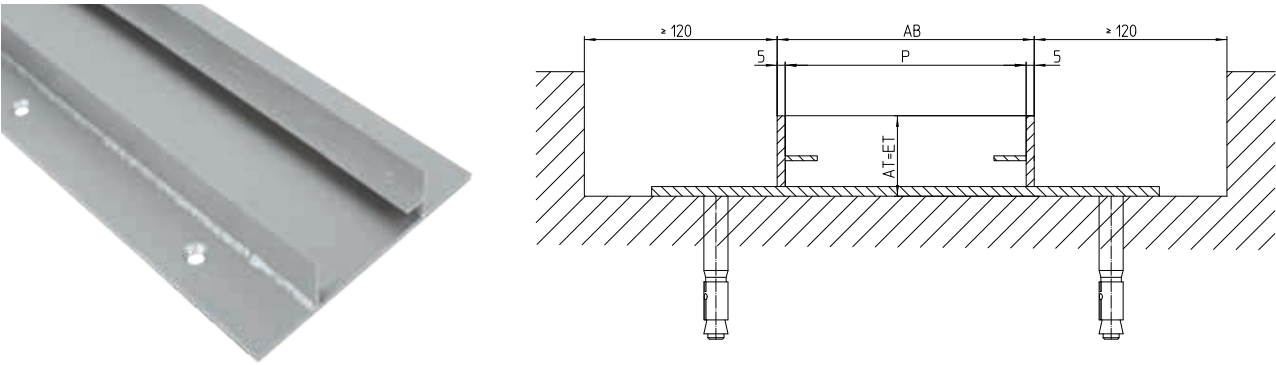
■ Fire protection by means of  
Wavin fire protection sleeve  
BB.R90



- Installation aid (without illustration)
- Welded-in or bottom-welded drainage channel  
floor drain (without illustration)

<sup>1</sup> all parts touched by media in 1.4571 (AISI 316 Ti)

### Heavy-duty drainage channel (SLR)



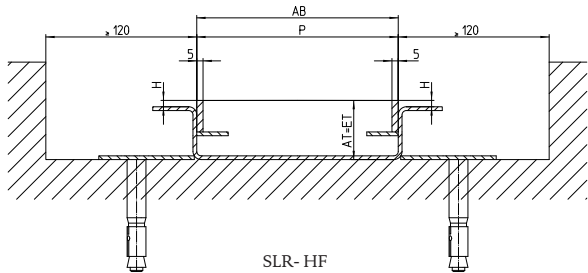
The design of the SLR is variable. The height, width and flange variant can be adjusted depending on the requirements and application. The material thickness of 4-6 mm permit installation in combination with mastic asphalt and concrete floor. The surface is stainless steel grain blasted.

Applications in particular include ramp areas of parking levels, multi-storey car parks and underground car parks that are subjected to high thrust and shearing forces. The design of the flange variants meets the requirements of DIN 18532-1.

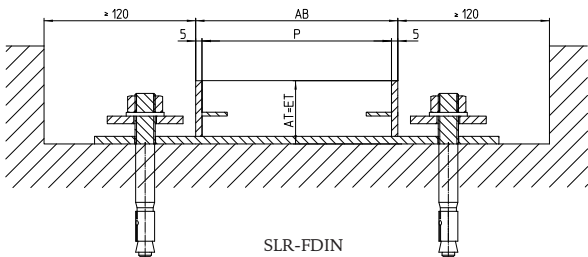
Channel model	Channel profile P [mm]	Outside width AB [mm]	Channel heightAT = ET	Initial length[mm]	Flange heightH [mm]
SLR-160	150	160	50 / 80 / 100	up to 5,800	Customer's choice
SLR-210	200	210	50 / 80 / 100	up to 5,800	Customer's choice
SLR-260	250	260	50 / 80 / 100	up to 5,800	Customer's choice
SLR-360	350	360	50 / 80 / 100	up to 5,800	Customer's choice

Customised dimensions on request

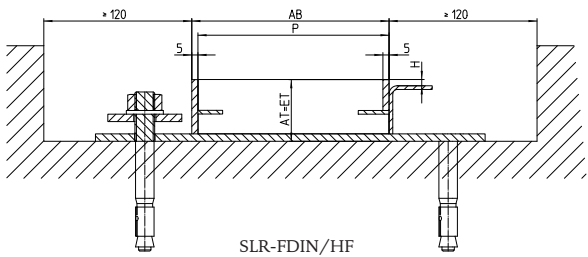
### SLR with different flange types



The SLR-HF is equipped with an adhesive flange on both sides to permit the connection to various floor coating systems. Designs are possible with and without seepage openings. The surface of the channel is stainless steel grain blasted.



The SLR-FDIN is equipped with a loose/fixed flange on both sides for a fixed connection to sealing sheets. Designs are possible with and without seepage openings. The surface of the channel is stainless steel grain blasted.



The SLR-FDIN/HF is a combination of the two systems described above.

### Material

- 1.4301 (AISI 304)
- 1.4571 (AISI 316Ti)<sup>1</sup>

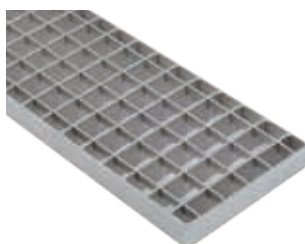
### Material thickness

- 4 mm
- 5 / 6 mm with FDIN to 18532-1

### Cover variants



■ GR MW30/10



■ GR MW25/25



■ Bar grate cover

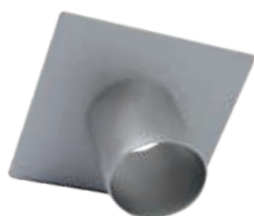


■ Plate cover

### Optional

- Load class possible up to D400 (depending on channel width)
- with anti-slip
- All covers also available as bolted connections (up to 8 bolts)
- GFK covers available on request

### Accessories



■ Welded nozzle NW DN 70/  
DN 100



■ Plug-in air trap DN 100



■ Silt box

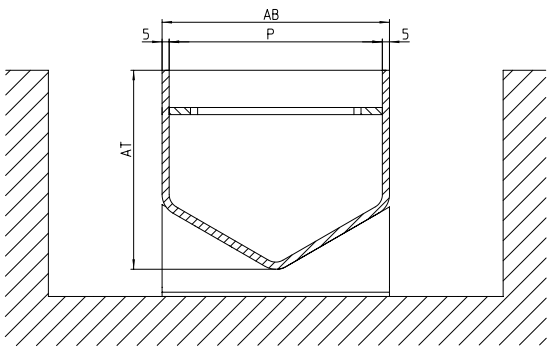


■ Fire protection by means of  
Wavin fire protection sleeve  
BB.R90



<sup>1</sup> all parts touched by media in 1.4571 (AISI 316 Ti)

Open area channel (FFKR)



The FFKR is an optimal solution in areas freely exposed to the weather with various surface coatings, e. g. mastic asphalt or interlocking pavement, where large quantities of water must be drained. The selected material thickness and the continuous support grating with cross-braces ensure high loading capacity.

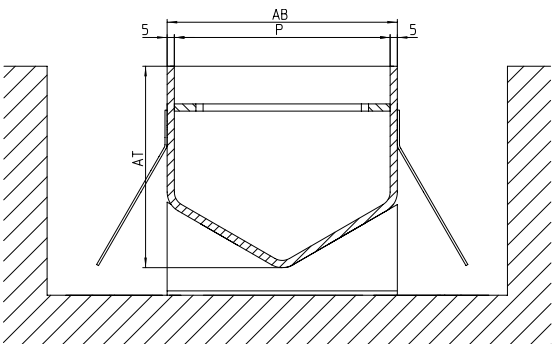
The large drain cross-section guarantees a high drainage capacity.

For improved stability, the drain is equipped with adjustable feet every 1,000 mm - height-adjustable upon request. Additional wall anchors are available as accessories. The surface of the drain is completely grain blasted.

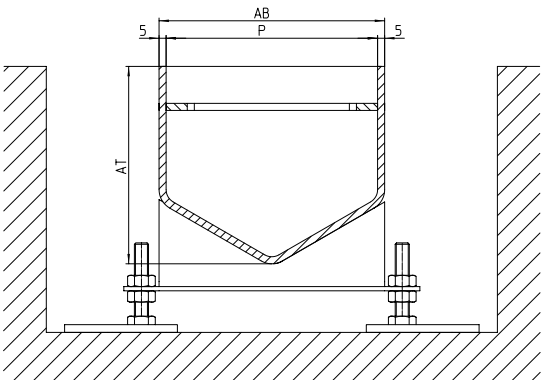
Channel model	Channel profile P [mm]	Outside width AB [mm]	Channel height AT [mm]	Initial length[mm]
FFKR-120	110	120	min. 140	up to 5,800
FFKR-160	150	160	min. 140	up to 5,800
FFKR-210	200	210	min. 140	up to 5,800
FFKR-260	250	260	min. 140	up to 5,800

Customised dimensions on request

Designs



To allow a force-fit ground connection in concrete, the drain is optionally available with side wall anchors - every 500 mm on both sides.



For individual height adjustment, the adjustable feet can also be provided with holes for the attachment of assembly feet.

### Material

- 1.4301 (AISI 304)
- 1.4571 (AISI 316Ti)<sup>1</sup>

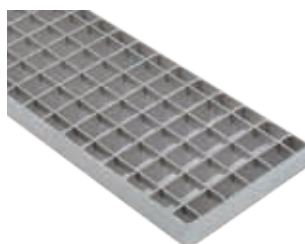
### Material strength

- 5 mm
- 6 mm

### Cover variants



■ GR MW30/10



■ GR MW25/25



■ Bar grating

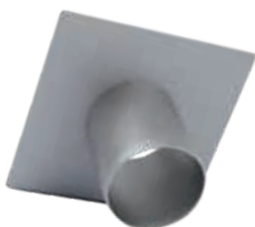


■ Plate cover

### Material strength

- Load class of up to D400 possible (depending on drain width and cover variant)
- with anti-slip
- all covers available as bolted connections

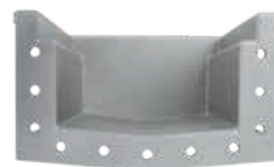
### Accessories



■ Welded-in nozzle  
NW DN 70/DN 100



■ Connector



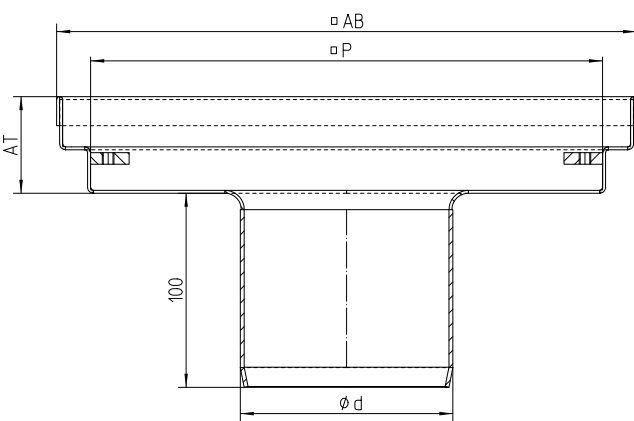
■ Flanged connection

- Height-adjustable assembly feet
- Wall anchors every 500 mm
- Silt box
- Installation aid
- Welded-in or bottomwelded floor drain

<sup>1</sup> all wetted parts in 1.4571 (AISI 316 Ti)



Parking level floor drain (PDA)



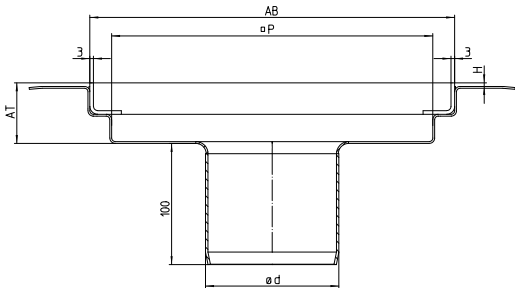
Drain model	Drain profile P [mm]	Outside width AB [mm]	DN	Ø d [mm]	Drain height AT [mm]	Flange heightH [mm]
PDA-200	164	200	70 / 100	75 / 110	50	variable
PDA-300	264	300	70 / 100	75 / 110	80	variable

Customised dimensions on request

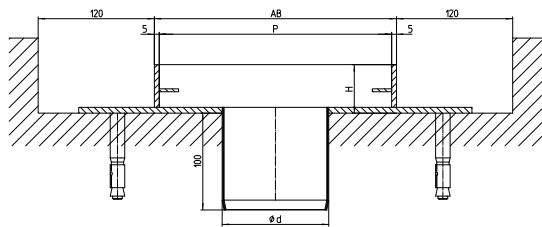
Parking level floor drain, one piece, PDA model with vertical drain nozzle.  
The surface is stainless steel grain blasted.

Applications include parking levels, multi-storey car parks, underground car parks and pedestrian underpass-  
es. The design of the flange variants meets the requirements of DIN 18532-1.

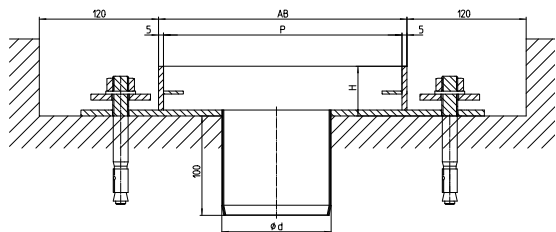
Drain variants



PDA-B



SLA-KBF



SLA-FDIN

The PDA-B parking level floor drain combines the functions of the PDA with an optional connection to liquid coating systems (e.g. PMMA). The adhesive flange with a width of 50 mm that is installed on the circumference allows a direct connection of the drainage system to the floor coating. The surface is stainless steel grain blasted.

A stick-on flange is attached to the circumference of the heavy-duty floor drain SLA-KBF. The selected material thickness of 4 - 6 mm permits installation in combination with mastic asphalt and concrete floor. The SLA-KBF is particularly suitable for areas that are subjected to high thrust and shearing forces. The surface is stainless steel grain blasted.

A loose/clamping flange is attached to the circumference of the heavy-duty floor drain SLA-FDIN for a fixed connection to sealing sheets. Designs are possible with and without seepage openings. The surface is stainless steel grain blasted.

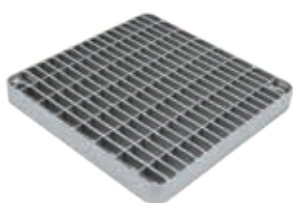
### Material

- 1.4301 (AISI 304)
- 1.4571 (AISI 316Ti)<sup>1</sup>

### Material thickness

- 1.5 mm    ■ 4.0 mm    ■ 6.0 mm
- 2.0 mm    ■ 5.0 mm

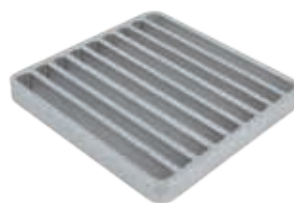
### Cover variants



■ GR MW30/10



■ GR MW25/25



■ Bar grate cover



■ Plate cover

### Optional

- Load class possible up to D400
- with anti-slip
- all covers also available as bolted connections
- GFK covers available on request

### Accessories



■ Plug-in air trap DN 100



■ Silt box

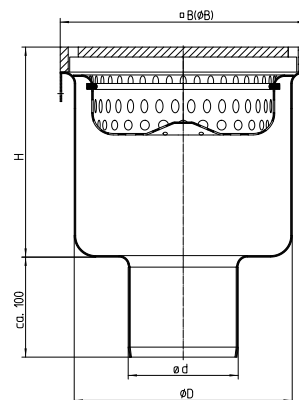


■ Fire protection by means of Wavin fire protection sleeve BB.R90



<sup>1</sup> all parts touched by media in 1.4571 (AISI 316 Ti)

## Parking level floor drain - one piece (DRS-S)

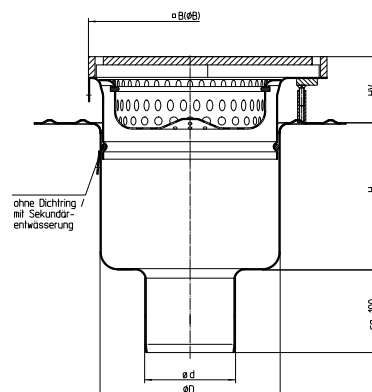


Parking level floor drain, one piece, DRS model, according to EN 1253. Drain from solid material 25 x 8 mm. The bottom of the housing as large and deep drawn inside radii to achieve a good self-cleaning effect. With perforated sheet silt trap made from stainless steel. Vertical drain nozzle. Surface stainless steel grain blasted/pickled.

Model	DN	Ø d [mm]	Ø B [mm]	Ø B [mm]	Ø D [mm]	H [mm]	Silt trap volume [ l ]	Discharge capacity [ l ] (without GV+SF)
DRS-070-E-S	70	75	180	-	153	165	0.5	> 6.2
DRS-070-RD-S	70	75	-	196	153	165	0.5	> 6.2
DRS-100-E-S	100	110	246	-	218	210	1.5	> 15.9
DES-100-RD-S	100	110	-	270	218	210	1.5	> 15.9

Customised dimensions available on request / NW DN 150/200.

## Parking level floor drain - two-piece, height adjustable (H-S)



Height adjustable, two-piece parking level floor drain, Model H, according to DIN EN 1253. The top part is height adjustable and twistable, available without sealing ring on request. Drain edge from solid material 25 x 8 mm, stick-on flange on base of bottom drain. The bottom of the housing as large and deep drawn inside radii to achieve a good self-cleaning effect. With perforated sheet silt trap made from stainless steel. Vertical drain nozzle. Surface stainless steel grain blasted/pickled.

Model	DN	Ø d [mm]	Ø B [mm]	Ø B [mm]	Ø D [mm]	H [mm]	HV [mm]	Silt trap volume [ l ]	Discharge capacity [ l ] (without GV+SF)	Fire protection (optional)	H (AR) [mm]
H-070-E-S	70	75	180	-	153	129	60-80	0.5	> 6.2	R90	120
H-070-RD-S	70	75	-	196	153	129	60-80	0.5	> 6.2	R90	120
H-100-E-S	100	110	246	-	218	178	60-80	1.5	> 15.9	R90	185
H-100-RD-S	100	110	-	270	218	178	60-80	1.5	> 15.9	R90	185
HK-100-E-S	100	100	200	-	190	119	60-80	0.65	> 15.9	R90	120
HK-100-RD-S	100	100	-	235	190	119	60-80	0.65	> 15.9	R90	120

Customised dimensions available on request / NW DN 150/200.

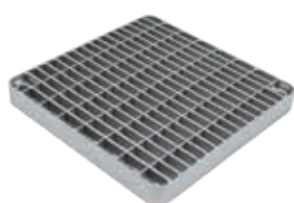
## Material

- 1.4301 (AISI 304)
- 1.4571 (AISI 316Ti)<sup>1</sup>

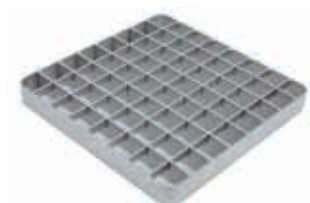
## Floor connection

- square
- round

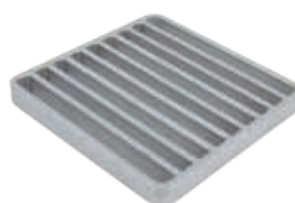
## Cover variants



■ GR MW30/10



■ GR MW25/25



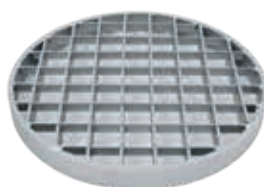
■ Bar grate cover



■ Plate cover



■ GR MW30/10



■ GR MW25/25

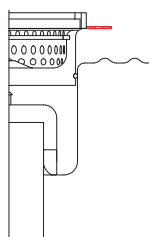


■ Bar grate cover

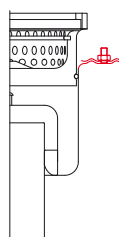


■ Plate cover

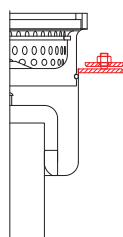
## Flange variants (optional)



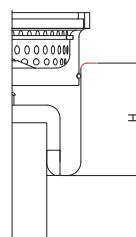
**HF**  
Adhesive  
flange



**KMF**  
Bonding flange

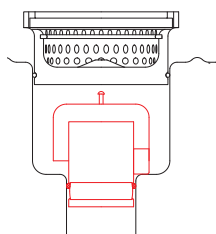


**FDIN**  
Fixed and loose flange  
to DIN 18532-1



**H (AR)**  
Connecting edge

## Additional equipment (optional)



**GVS**  
Plug-in air trap



**BS**  
Fire protection, Wavin

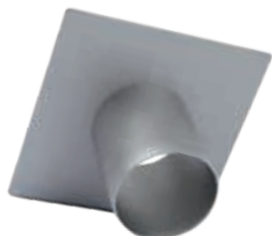


<sup>1</sup> With the selected material 1.4571 (AISI 316Ti) some parts may be made from 1.4404 (AISI 316L) material due to the manufacturing process.

## Accessories

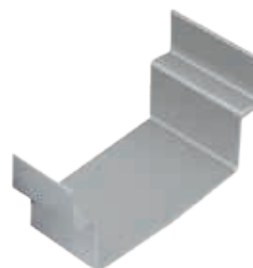
### Welded nozzle

Seal welded drainage nozzle. Nominal width DN 70/100/150. Length adjustable according to floor thickness requirements.



### Connector

Connector for channel connection by customer with suitable sealing material (not included in delivery).



### Air trap

Can be plugged-in in combination with a welded nozzle DN100



### Silt box

For parking level floor drains or parking level channels in combination with a welded nozzle. Various nominal widths/heights available.



### Flange connection

Connecting flange with bolts and chloride-resistant seal. We recommend that you have our in-house technicians weld the channel joints at the construction site.



### Fire protection sleeve

In the event of fire, the Wavin fire protection sleeve BM-R90 closes the wall or floor duct thanks to a special fire protection material that expands completely in hot conditions!



### Installation aid

If installation in an existing recess is not possible using mounting feet, such as due to limited space, we can offer you a low-cost installation aid for parking area drainage channels. This installation aid is used to align and fix the channel above the flooring.

### Welded in or bottom welded channel floor drain.

An alternative to a welded nozzle is the integration of the floor drains shown on pages 12 to 15 in the drainage channels.



## PRW angular design



Customised dimensions and special types on request

Stainless steel angular design for flooring separation, welded design, with or without flange to DIN 18195 T9 as required. Floor connection by means of high-performance floor anchors.

Applications include parking levels, multi-storey car parks and underground car parks.

### Material

- 1.4301 (AISI 304)    ■ 1.4571 (AISI 316Ti)

### Material thickness

- To DIN 18532-1 6 mm or as per specification up to 12 mm

### Individual lengths

- up to 5,800 mm in one piece

### Leg lengths

- Customer's choice

### Flange variants

- Loose/clamping flange to DIN 18532-1
- Adhesive flange

### Special types

- Corner installations
- T profile

### Accessories

- Head bolts



**WIEDEMANN-TECHNIK**

Quality in stainless steel



**Wiedemann GmbH**

Siemensstraße 16–18 | D-25813 Husum | Phone +49 4841 778-0 | Fax +49 4841 1687

info@wiedemann-technik.de | [www.wiedemann-technik.de](http://www.wiedemann-technik.de)