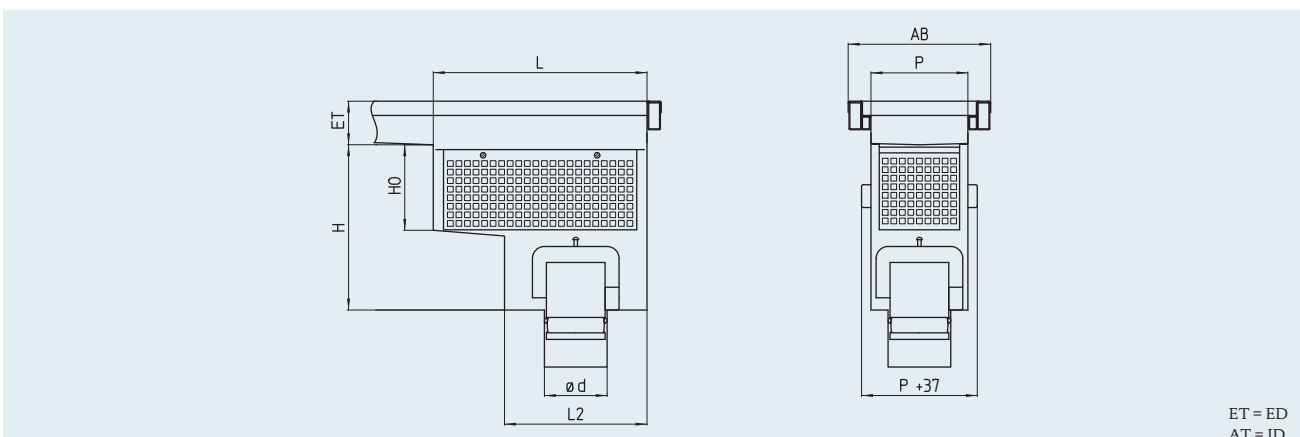
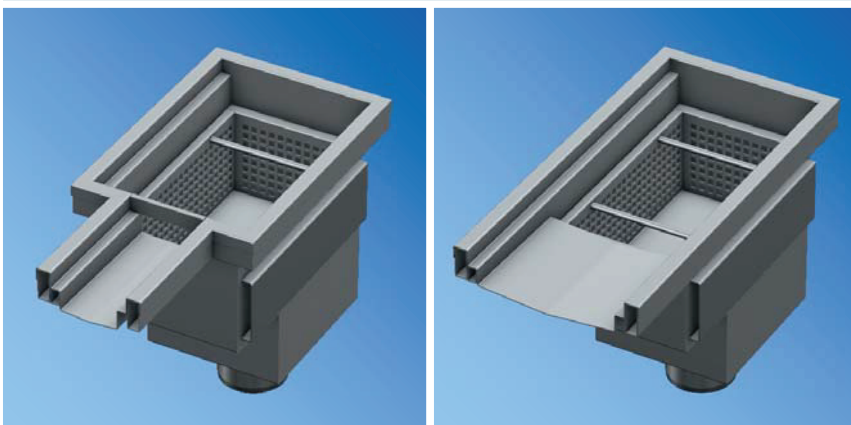


Channel drain RSKH-END-S



ET = ED
AT = ID

Channel drain – end – vertical

Model	Nominal size DN	Ø d [mm]	Profil P [mm]	AB [mm]	L [mm]	L2 [mm]	H [mm]	HO [mm]	Flow rate [l/s]	Silt box vol. [l]
RSKH-090-070-END-S	70	75	90	170	300	200	290	150	> 1.5	2.2
RSKH-120-070-END-S	70	75	120	200	300	200	290	150	> 1.5	3.2
RSKH-170-100-END-S	100	110	170	250	375	250	290	150	> 2.8	6.7
RSKH-220-100-END-S	100	110	220	300	465	330	350	180	> 2.8	7.5
RSKH-220-150-END-S	150	160	220	300	465	330	350	180	> 8.2	7.5
RSKH-320-150-END-S	150	160	320	400	450	330	350	180	> 8.2	22.2
RSKH-320-200-END-S	200	200	320	400	450	330	360	180	> 12.5	22.2
RSKH-420-200-END-S	200	200	420	500	450	330	360	180	> 12.5	29.9
RSKH-420-250-END-S	250	250	420	500	550	430	390	180	> 20.2	36.9

Description for use in tenders

Channel drain, single-part, Model RSKH, according to EN 1253, welded in the channel. With plug-in air trap and a large stainless steel silt box that overlies the water steel. Drain base with gradients to the discharge. Edge protection reinforced with an internally mounted, welded rectangular profile and channel edge. Floor connection as channel. Vertical runoff support. Surface grain blasted.

Nominal width:	• DN 70	• DN 100	• DN 150	• DN 200	• DN 250
Grade:	• 1.4301 [AISI 304]		• 1.4571 [AISI 316 Ti] ⁸⁾		
Cover:	• Plate cover, M125 • Grating MW25 Support rod 25/2RH		• Bar grate, M125 • Grating MW25 Support rod 25/3RH		• Plate cover, 5 mm • Grating MW25 Support rod 25/4RH

We will be pleased to provide a description for specific objects for use in tenders.

⁸⁾ all parts in contact with media in 1.4571 (AISI 316 Ti)