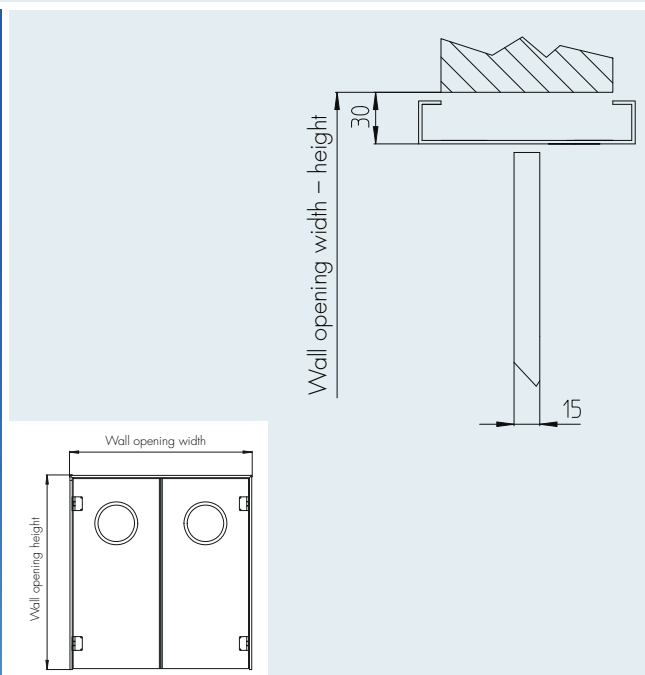


# Plastic swing doors PPT1 / PPT2



## Wall opening (width x height)

\_\_\_\_\_ x \_\_\_\_\_ mm

## Standard dimensions

from: 800 x 1800 mm  
to: 2200 x 2600 mm      Other dimensions available on request.

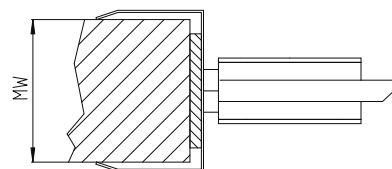
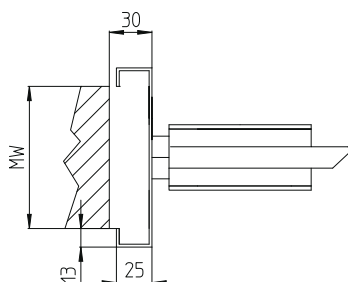
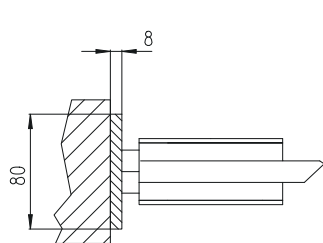
## Surface

PE 500 in colours::

- white
- red (similar to RAL 3020)
- blue (similar to RAL 5010)
- yellow (similar to RAL 1018)
- green (similar to RAL 6024)
- Other colours available on request.

## Frames

- Flush frame (FL) <sup>3)</sup>
- Surrounding frame (UZ) <sup>3)</sup>
- Cut-out frame (KLR) <sup>4)</sup>



## Description for use in tenders

Plastic swing door PPT1 / PPT2 for service rooms; leave 15 mm thick, made in PE 500. Self-closing with stainless steel spring hinges; with finger guard from 90 cm above floor level; without handle fittings, with clear acrylic sight window.