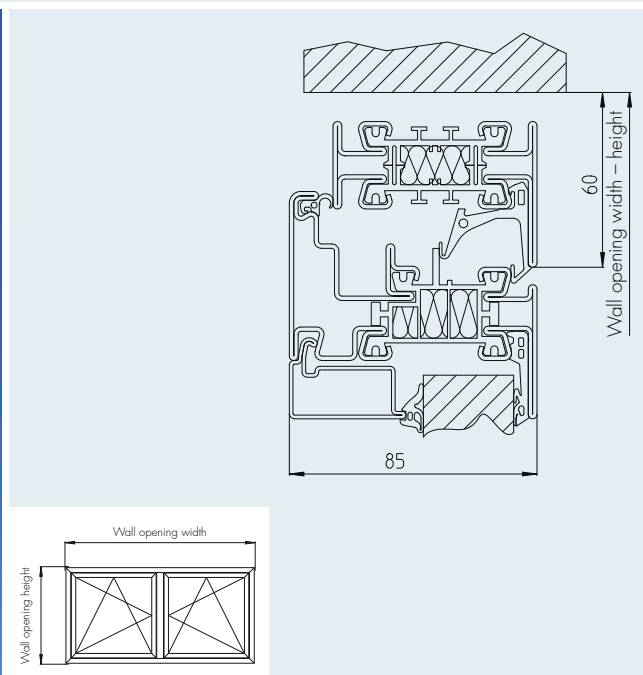


# Profile window (warm) FEW1



## Wall opening (width x height)

## Standard dimensions

\_\_\_\_\_ x \_\_\_\_\_ mm

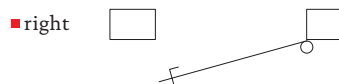
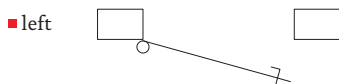
from: 500 x 500 mm  
to: 1350 x 1350 mm      Other dimensions available on request.

## Surface

- Ground
- Stainless steel bead blasted

Other finishes available on request.

## Opening direction

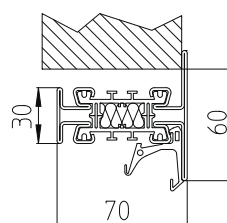
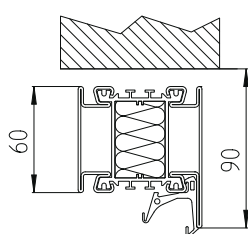
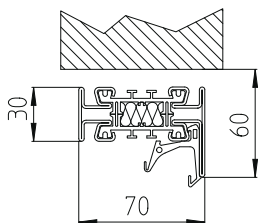


## Frame designs

- Block frame (BRD 50) <sup>3)</sup>

- Block frame (BRD 80) <sup>3)</sup>

- T-profile frame (RT) <sup>3)</sup>



## Description for use in tenders

Insulated profile window, model FEW; profile depth 70 mm, fully sealed, made in extruded hollow profiles, 1.5 mm thick; thermal insulation composite bar; frame facing and transom with grooves for seals and glazing bars; with double sealing level; welded glazing bar connections, frame and leaf corners; insulation glass panes/double-wall panels; door design according to specifications; corrosion protected hinges (swing, tilt, swing/tilt mechanism); stainless steel handle set. Optional: fire protection and burglary protection up to RC 4.

## Material

- 1.4301 (AISI 304)

- 1.4401 (AISI 316 Ti) <sup>1)</sup>