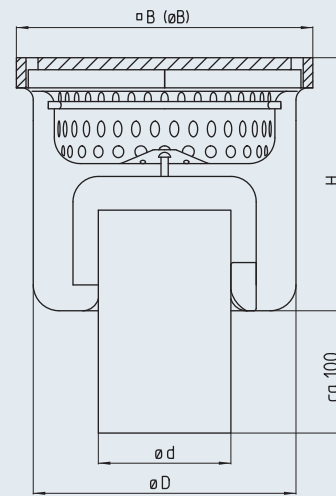


Industrial floor drain – single-part DRS-S DRSK-S – vertical

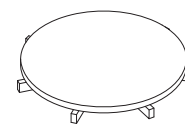
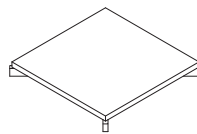


B = W
HV = HA

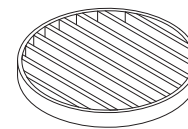
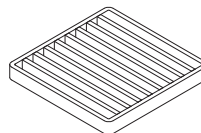
Model	DN	Ø d [mm]	∇ W [mm]	Ø W [mm]	Ø D [mm]	H [mm]	Silt box volume [l]	Flow rate [l/s]
DRS-070-E-S	70	75	180	-	153	165	0.5	> 1.5
DRS-070-RD-S	70	75	-	196	153	165	0.5	> 1.5
DRS-100-E-S	100	110	246	-	218	210	1.5	> 2.8
DRS-100-RD-S	100	110	-	270	218	210	1.5	> 2.8
DRS-150-E-S	150	160	310	-	283	250	2.75	> 8.2
DRS-150-RD-S	150	160	-	331	283	250	2.75	> 8.2
DRS-200-E-S	200	200	410	-	356	315	6	> 12.5
DRS-200-RD-S	200	200	-	410	356	315	6	> 12.5
DRSK-100-E-S ¹⁷⁾	100	110	200	-	183	175	0.65	> 2.8
DRSK-100-RD-S ¹⁷⁾	100	110	-	235	183	175	0.65	> 2.8

Cover variants²⁾

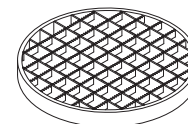
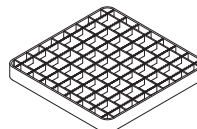
- Plate cover, M125, 10 mm



- Bar grate cover, M125



- Grating



- Plate 5 mm, not illustrated
- Plate 3 mm, hole ø 8 mm, not illustrated

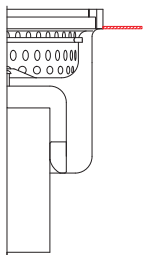
Inlet rim

- square
- round

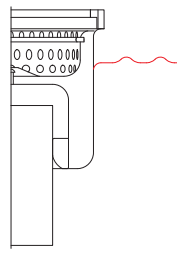
Grade

- 1.4301 (AISI 304)
- 1.4571 (AISI 316 Ti)¹⁾

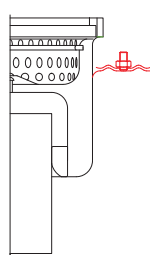
Flange variants (optional)⁴⁾



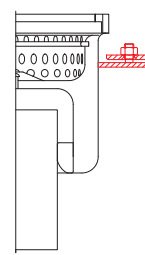
HF
Bonding flange
HFLALO
Bonding flange, perforated



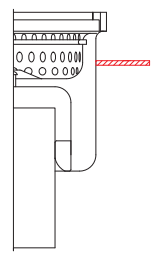
KBF
Adhesive flange
with soakage pits



KMF
Clamping flange
with soakage pits

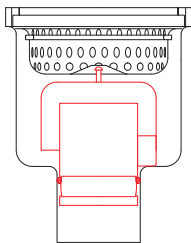


FDIN
Clamping flange
according to DIN 18534-2
with soakage pits

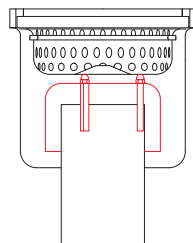


TGF
Support flange

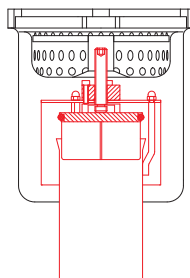
Supplementary equipment (optional)



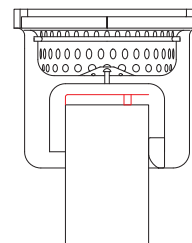
GVS
Air trap, plug-in



GVV
Air trap, bolted



AS¹⁴⁾
Air trap,
lockable



SBV Sieve plate, bolted
SBS Sieve plate, plug-in
SBE Sieve plate, welded

Description for use in tenders

Industrial floor drain, single-part, Model DRS, according to EN 1253. Inlet rim solid 25 x 8 mm. To achieve a high self-cleansing effect, the bottom of the housing has large and deep-drawn inside radius. Welded standpipe with maintenance-free air trap in stainless steel without sealing ring and perforated silt box. Vertical outlet. Surface grain blasted/pickled.

Nominal width:	• DN 70	• DN 100	• DN 150	• DN 200
Grade:	• 1.4301 [AISI 304]		• 1.4571 [AISI 316 Ti] ¹⁾	
Cover:	• Plate cover, M125, 10 mm • Grating MW25 Support rod / 25/2RH		• Bar grate cover, M125 • Grating MW25 Support rod 25/3RH	
Inlet rim:	• square		• round	

Optional	Flange variants:	• Bonding flange • Bonding flange, perforated	• Adhesive flange, t = 1.5 mm • Clamping flange, t = 1.5 mm	• Clamping flange conform with DIN 18534-2, t = 6 mm • Support flange
	Air trap:	• with plug-in air trap • welded standpipe with bolted air trap • removable standpipe with air trap • welded standpipe, lockable with mandril		
	Silt box:	• Silt box with overflow slits		

We will be pleased to provide a description for specific objects for use in tenders.

¹⁾ If grade 1.4571 is used (AISI 316Ti) some components may be made of grade 1.4404 (AISI 316) for construction reasons ²⁾ for other covers and explanations see the page on cover variants ³⁾ For explanations see page on flange variants ⁴⁾ H dimension changes ¹⁷⁾ Not all options available.